



MGS Series

Flow Switch for Easy flow checking & Available anywhere

■ FEATURE

- Contact point can be sent to outside
- Can be used at high temperature and high pressure
- No restriction on fluid direction

■ SUMMARY

MGS Series is a flow switch that detects flow and sends a contact to the outside.

Specially designed for use at low flow rates, high temperatures and high pressures, and can be used even in high viscosity applications such as oil. It is easy to install because there is no restriction on the direction of fluid.

MGS Series General Specifications

Size	10A(3/8") ~ 40A(1-1/2")
Process Connection	KS/JIS/ASME/DIN Std Flange or Screw
Fluid Temperature	Max. 80 °C (Option. 350 °C)
Max. Pressure	Max. 20 kgf/㎠.G (Option. 50 kgf/㎠.G)
Accuracy	±5 % F.S (Option. ±1.5 % M.V)

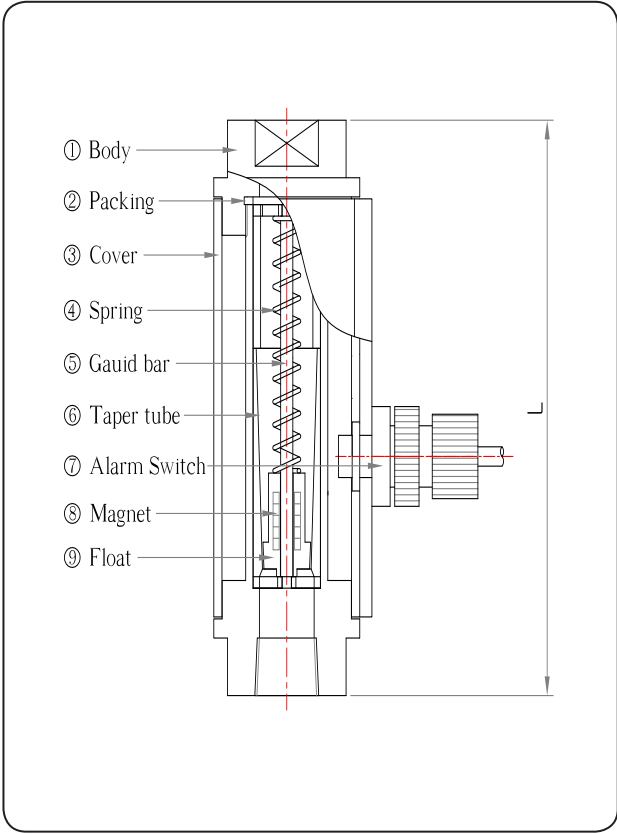
STANDARD MATERIAL

No.	Description	Material	
		A	B
1	Body	304SS	316SS
2	Packing	NBR, PTFE	
3	Cover	304SS	
4	Spring	316SS	
5	Guide bar	304SS	316SS
6	Taper tube		
7	Alarm switch	ACETAL	
9	Float	304SS	316SS

DIMENSIONS

Model	10A	15A	20A	25A	32A	40A
Length (mm)	150	150	150	180	200	220

STRUCTURAL DRAWING





FSM Series

Flow Switch for Easy flow checking & Available anywhere

■ FEATURE

- Can be used at high temperature and high pressure
- Fast response
- Excellent corrosion resistance and chemical resistance
- Various Measurable Fluids
- Price is low

■ SUMMARY

FSM Series is an inline flow switch for liquids, designed for high temperature and high pressure fluids and environments.

If the flow rate is above or below the set value, the contact signal is output externally. Because of its simple structure and installation in a narrow space, it can be applied to various fields such as semiconductor equipment, industrial cleaning equipment, and high pressure lubrication system.

FSM Series General Specifications

Connection & Size	PT(1/2",3/8"), Tube fitting(3/8")
Flow Ranges	(1.0 ~ 9) LPM, (0.15 ~ 2) GPM
Fluid Temperature	-30 °C ~ 80 °C
Max. Pressure	Max. 100 kgf/㎠.G
Switch	SPST, 20VA, N.O. at no flow

STANDARD MATERIAL

No.	Description	Material
1	Body	304SS
2	Piston	PEEK
3	Socket	316SS
4	Spring	304SS
5	Fitting nut	316SS
6	Stripper bolt	304SS
7	Sensor	304SS Cover with Molded Epoxy
8	O-ring	NBR, EPDM, PTFE

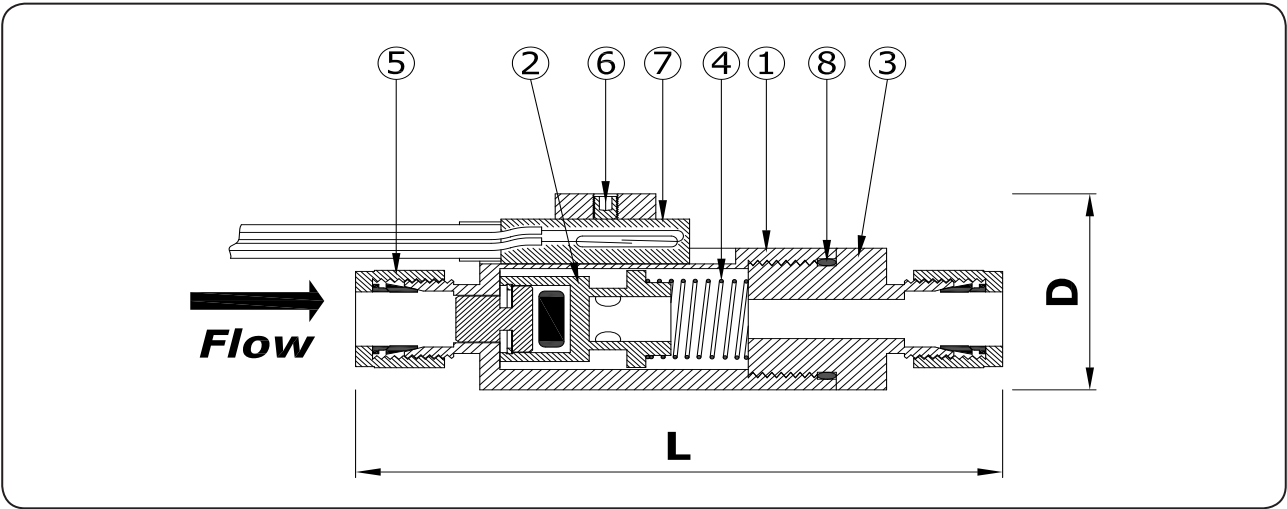
STANDARD SETTING POINT

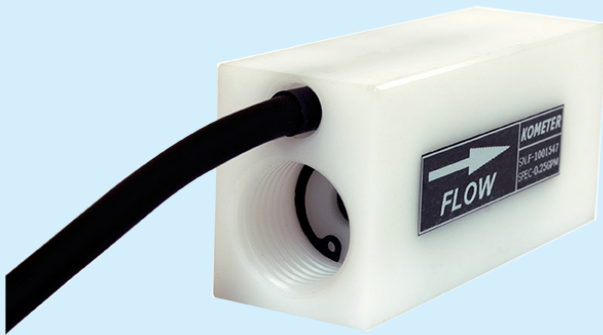
Flow setting		Note
LPM	GPM	
1.0	0.15	
1.5	0.25	
2.0	0.50	
4.0	1.00	
6.0	1.50	
9.0	2.00	

DIMENSIONS

Size	Length (mm)	
	L	D
PT(M) 1/2"	102	35
PT(M) 3/8"	88	
Tube Fitting 3/8"	102	

STRUCTURAL DRAWING





FSP Series

Flow Switch for Easy flow checking & Available anywhere

■ FEATURE

- Fast response
- Excellent corrosion resistance and chemical resistance
- Various Measurable Fluids
- Price is low

■ SUMMARY

FSP Series is an inline flow switch for liquids, designed for high temperature and high pressure fluids or environments.

If the flow rate is above or below the set value, the contact signal is output externally. Because of its simple structure and installation in a narrow space, it can be applied to various fields such as semiconductor equipment, industrial cleaning equipment, and high pressure lubrication system.

FSP Series General Specifications

Connection & Size	PT(F)1/2"
Flow Ranges	(0.7 ~ 9) LPM (0.15 ~ 2) GPM
Fluid Temperature	-30 °C ~ 80 °C
Max. Pressure	Max. 10 kgf/㎠.G
Switch	SPST, 20VA, N.O. at no flow

STANDARD MATERIAL

No.	Description	Material
1	Body	POM(ACETAL)
2	Piston	PVC
3	Stop Ring	POM(ACETAL)
4	Spring	304SS
5	C-Ring	304SS
6	Sensor	304SS Cover with Molded Epoxy

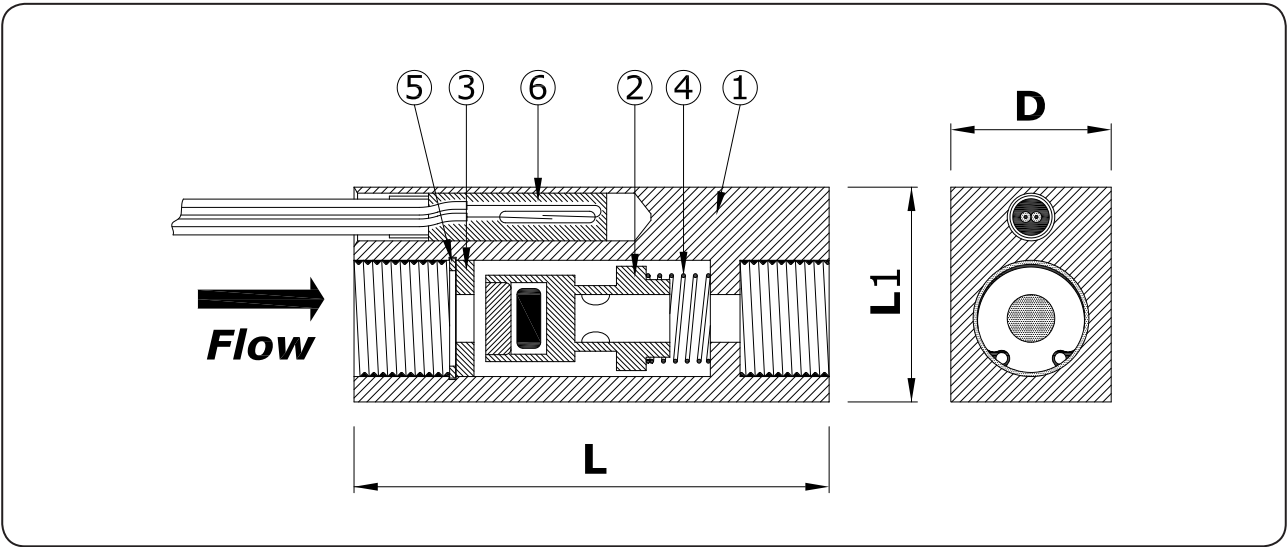
STANDARD SETTING POINT

Flow setting		Note
LPM	GPM	
1.0	0.15	
1.5	0.25	
2.0	0.50	
4.0	1.00	
6.0	1.50	
9.0	2.00	

DIMENSIONS

Size	Length (mm)		
	L	L1	D
PT(F) 1/2"	80	36	27

STRUCTURAL DRAWING





FS-1 Series

Flow Switch for Easy flow checking & Available anywhere

■ FEATURE

- Can be used at high temperature and high pressure
- Fast response
- Excellent corrosion resistance and chemical resistance
- Various Measurable Fluids
- Price is low

■ SUMMARY

FS-1 Series has a simple, compact size for inline flow switch designs for liquids.

If the flow rate is above or below the set value, the contact signal is output externally. Because of its simple structure and installation in a narrow space, it can be applied to various fields such as semiconductor equipment, industrial cleaning equipment, and high pressure lubrication system.

■ FS-1 Series General Specifications

Connection & Size	PT (F) 1/2" ~ 3/4"
Flow Ranges	(0.5 ~ 5) LPM
Fluid Temperature	-30 °C ~ 80 °C
Max. Pressure	Max. 20 kgf/㎠.G
Switch	SPST, 20VA, N.O. at no flow

■ STANDARD MATERIAL

No.	Description	Material
1	Body	304SS
2	Reed Switch	Glass </td
3	Magnet	ND
4	Body	304SS
5	Float	304SS
6	Flapper	304SS

■ DIMENSIONS

Size	Length (mm)	
	L	D
PT(F) 1/2"	51	71
PT(F) 3/4"	57.5	74

■ STRUCTURAL DRAWING

